

KERSTEN[®]

spare parts list

front sweeper

EFKM 10037 M-U70; 12537 M-U70

Working width 100 and 125 cm, roller diameter 37 cm for
single-axle tractors with PTO drive



Order number: E00113

from machine number:

Rev.: R00

Status: 15.11.2018



Arealmaschinen GmbH

Empeler Straße 95

D - 46459 Rees

www.kersten-maschinen.de

Tel.: +49 (0) 2851 / 9234 - 19

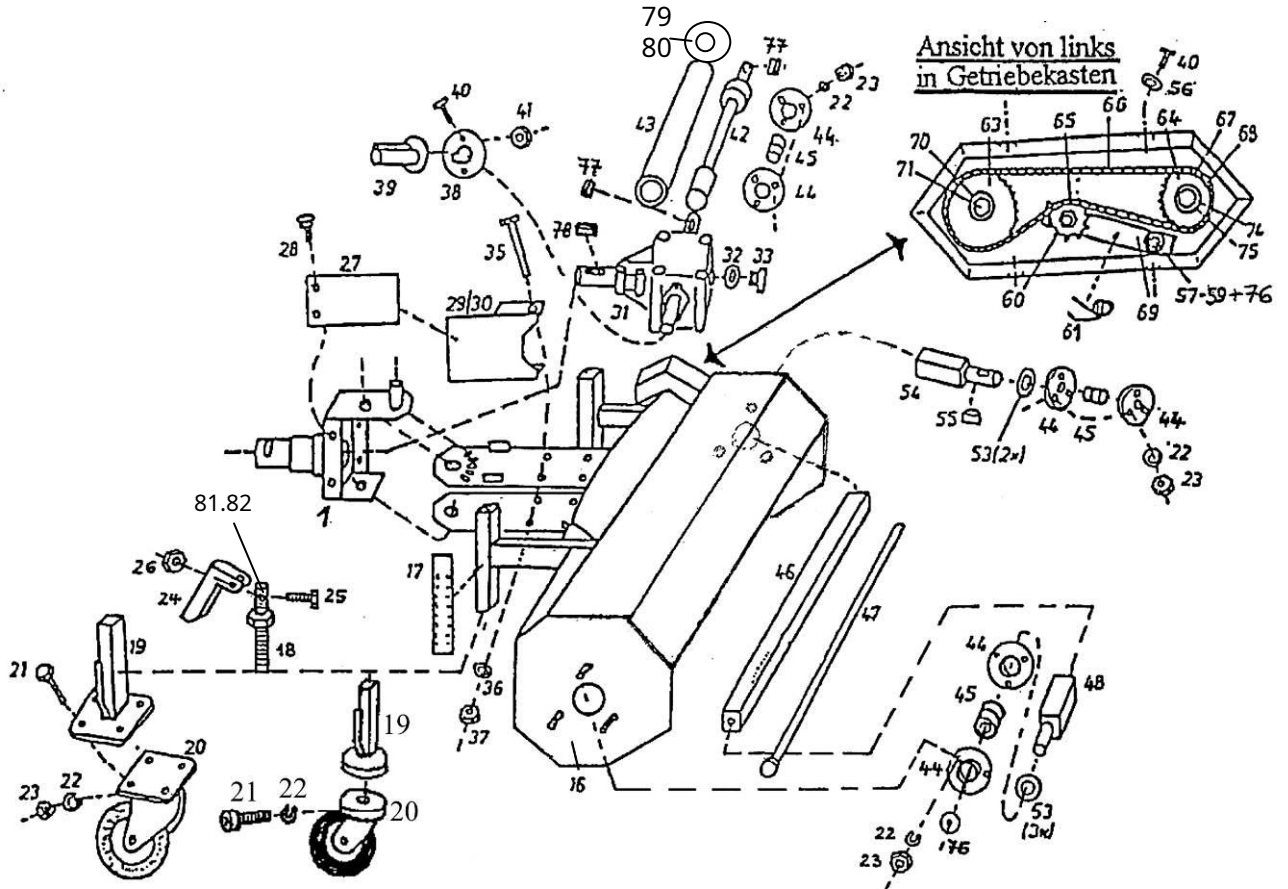
Fax: +49 (0) 2851 / 9234 - 24

Table of contents

1	Basic device EFKM 10037M-U70, EFKM 12537M -U70	4
2	Recording on various single-axle types as of 01.03.....	6
3	Accessories EFKM 10037; 12537 M-U70 Stand: 10.03.08.....	7
4	Sweeping rollers Ø 37 cm for EFKM 10037, EFKM 12537 M-U70.....	9
5	Water sprinkler for sweeper (5 liters)	10

1 Basic device EFKM 10037M-U70, EFKM 12537M -U70

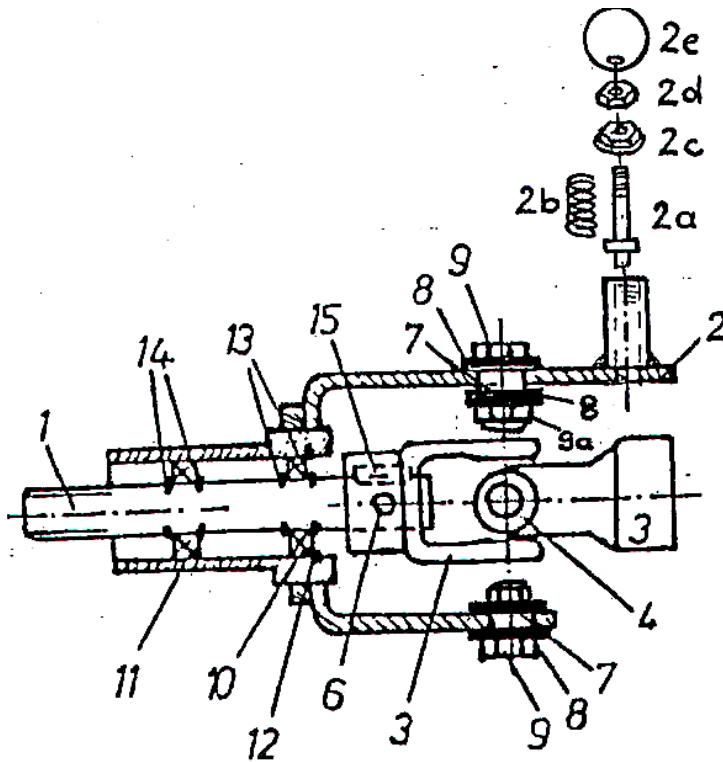
(mechanical drive) from 01.03 Status: 06.03.08



No.	Order No.	number	Designation
1	see the following sketch		
16c	C03658	1	housing FKM 1050E
16d	C06586	1	housing FKM 1255E
17	700 000 151	2	altitude scale
18	100,000,490	2	spindle
19	100,000,485	2	roller holder
20	926 302 140	2	roller
21	901 008 016	8	hexagon screw
22	905 008 000	17	spring ring
23	900 008 001	17	Mother
24	700 000 085	2	twist grip
25	901 005 020	2	screw
26	900 005 002	2	lock nut
27	050 150 005	2	PTO protection part
28	905,108,000	4	washer
29	040 999 010	1	PTO guard right
30	040 999 011	1	PTO guard left
31	922,101,000	1	Bevel gear, complete
32	937 120 025	1	sealing ring
33	931 000 031	1	oil filler plug
34	924425 477	3	Shaft seal 25x47x7 without picture
35	901 110 120	4	screw
36	905,010,000	4	spring ring
37	900 010 001	4	Mother

No.	Order No.	Anz	Designation
38	040 999 012	1	cover plate gearbox
39	943 400 028	1	cover cap
40	901 006 012	6	screw
41	900 006 002	2	lock nut
42a	100 000 100	1	drive shaft EFKM 10037
42b	125,000,100	1	drive shaft EFKM 12537
43a	100 000 105	1	protective tube EFKM 10037
43b	125 000 105	1	protective tube EFKM 12537
44	924 200 205	6	bearing shell
45	924 100 205	3	camp
46a	040 000 440	1	drive tube EFKM 10037
46b	041 000 440	1	drive tube EFKM 12537
47a	040 000 435	1	tension rod EFKM 10037
47b	041 000 435	1	tension rod EFKM 12537
48	100,000,430	1	drive stub, right
53	905,125,000	5	washer
54	100,000,425	1	drive stub, left
55	908 108 715	1	key
56	905,206,000	4	body glass
57	901 110 055	1	screw
58	905,110,000	2	washer
59	900 010 002	1	lock nut
60	900 038 011	1	Mother
61	909 300 461	1	torsion spring
62	100 001 270	1	transmission cover
63	920 403 222	1	sprocket, large 22 Z
64	920 403 114	1	sprocket, small 14 Z
65	920 603 010	1	tension wheel
66	920 103 775	1	Chain
67	920,203,000	1	half a chain link
68	920,303,000	1	chain lock
69	100 001 255	1	clamping lever
70	905 209 283	1	body glass
71	901 008 016	1	screw
72	705 407 509	1	spacer - behind position 63
73	705 407 506	1	spacer - behind position 64
74	905 300 251	1	disc
75	906,000,250	1	Seegering
76	905 210 303	2	body glass
77	908 008 725	2	key
78	908 008 730	1	key
79	C06089	1	holder drive shaft protection
80	902 604 012	1	self-tapping screw
81	900 005 002	2	lock nut
82	014 100 002	1	spacer bushing

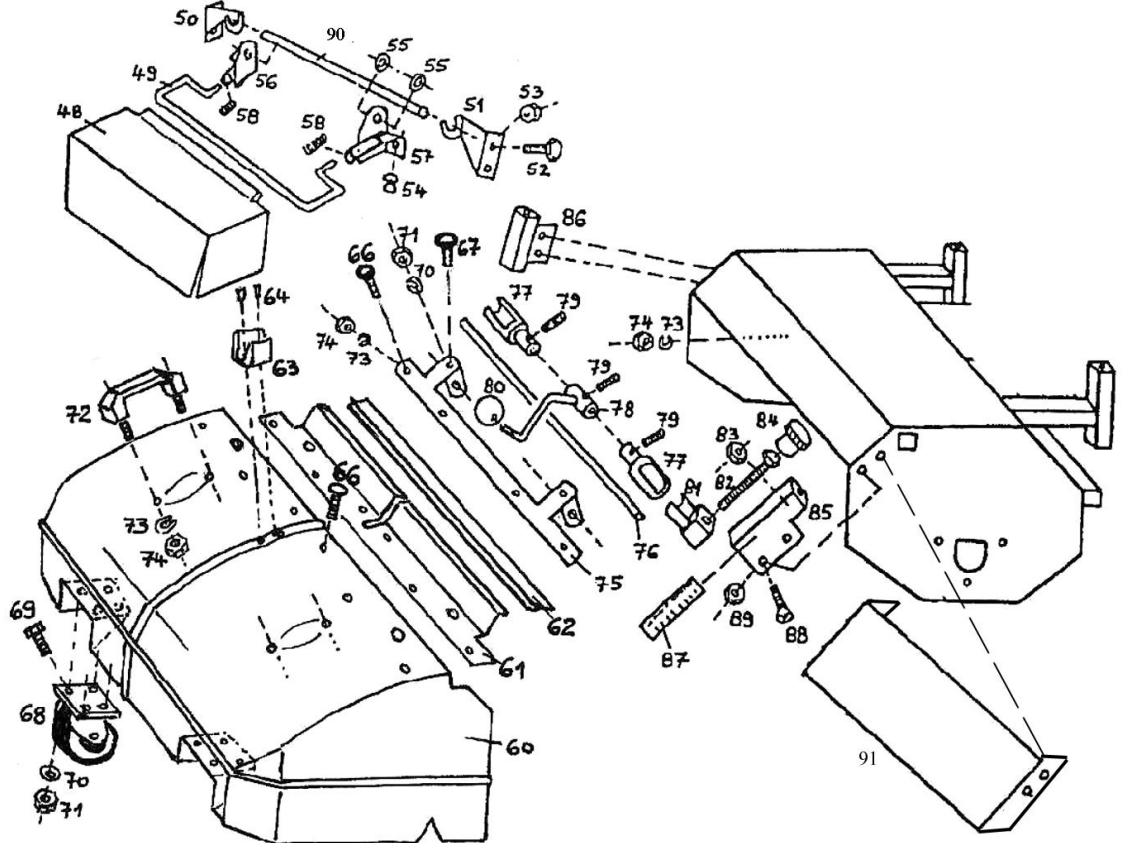
2 Mounting on various single-axle tractor types as of March 1st



No.	Order No.	Anz	Designation
1	040 ... 101	1	drive shaft
2	040 ... 102	1	Recording, please specify the single-axle type!
2a	700 001 170	1	locking pin
2b	909 100 189	1	compression spring
2c	700 001 171	1	Plug
2d	900 010 001	1	Mother
2e	941 220 010	1	ball button
3	923 113 011	2	Fork
4	923,109,000	1	cross set
5	923,110,000	1	= Pos.3 + 4 = universal joint, complete
6	902 310 008	1	screw
7	705 105 135	2	socket - 13.5mm long
8	905 210 303	4	body glass
9	901 010 035	2	screw
9a	900 010 002	2	lock nut
10	924 106 ...	1	Bearing, please specify the single-axle type!
11	924 106 ...	1	Bearing * = single-axle?
12	905 9.. 000	1	Seegerring * = single-axle?
13	906,000 ...	2	Seegerring * = single-axle?
14	906,000 ...		Seegerring * = single-axle?
15	908 008 725	1	key
1-15	040 ... 999	1	Mounting, complete, please specify the single-axle type!

3 Accessories EFKM 10037; 12537 M-U70

Status: 10.03.08

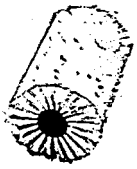
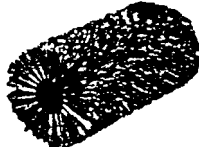

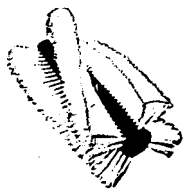


No.	Order No.	Anz	Designation
47	900 006 002	4	lock nut
48a	712 100 094	1	mud flap 1.00 m
48b	126,000,094	1	mud flaps 1.25 m
49a	712 100 095	1	carrying handle 1.00 m
49b	712 125 095	1	carrying handle 1.25 m
50	712 000 096	1	retaining plate, right
51	712 000 097	1	retaining plate, left
52	901 008 016	4	screw
53	900 008 002	4	lock nut
54	943 700 910	2	plug-in buffer
55	906,510,000	4	lock washer
56	712 000 128	1	connecting plate right
57	712 000 129	1	connecting plate left
58	909 100 207	2	compression spring
57	712 000 129	1	connecting plate left
58	909 100 207	2	compression spring
60a	100 101 625	1	collection container 1.0 m
60b	125 101 625	1	collection container 1.25 m
61a	100 101 626	1	support rail 1.00 m
61b	125 101 626	1	support rail 1.25 m
62a	712 100 111	1	rubber strip 1.00 m
62b	712 125 111	1	rubber strip 1.25 m
63	912 900 101	1	lever holder
64	901 003 016	2	screw
66	903 606 020	6	truss-head screw
67	903 608 020	2	truss-head screw

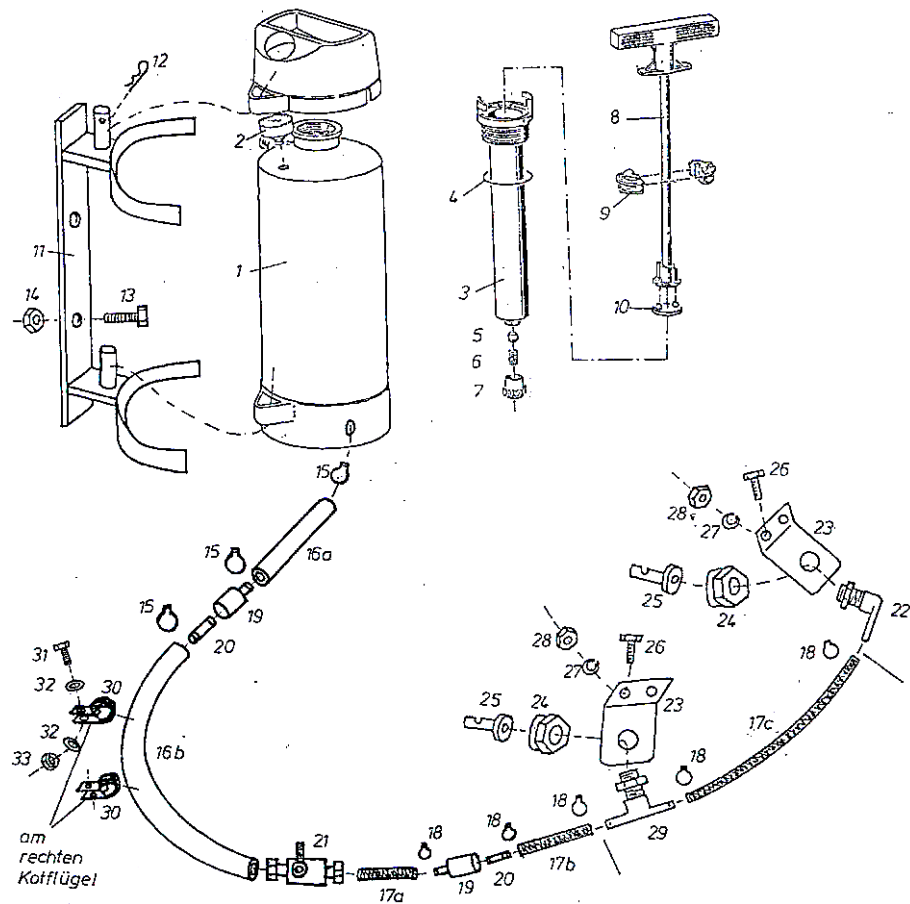
No.	Order No.	Anz	Designation
68	926 301 076	2	roller
69	901 008 016	8	screw
70	905 008 000	10	spring ring
71	900 008 001	10	Mother
72	941 636 006	2	handle
73	905,006,000	6	spring ring
74	900 006 001	6	Mother
75a	712 100 115	1	locking rail 1.00 m
75b	712 125 115	1	locking rail 1.25 m
76a	712 100 116	1	locking rod 1.00 m
76b	712 125 116	1	locking rod 1.25 m
77	712 000 117	2	container closure tube
78	712 000 118	1	container locking lever
79	902 306 005	3	grub screw
80	941 220 008	1	ball button
81	712 000 120	2	locking block
82	901 012 130	2	screw
83	900 012 002	2	lock nut
84	941 410 031	2	twist grip
85a	712 000 121	1	Guide rail left- roller 370 mm Ø
85b	712 000 121	1	guide rail left450
86a	712 000 122	1	Guide rail. right- roller 370 mm Ø
86b	712 000 122	1	guide rail. right- 450
87	700 000 151	2	height scale
88	901 208 016	4	countersunk screw
89	900 008 002	4	lock nut
90a	712 100 216	1	hanging rod 1.00
90b	712 125 216	1	suspension rod 1.25
91a	712 090 119	1	Splash guard 1050 mm instead of container or splash flap

4 Sweeping rollers Ø 37 cm for EFKM 10037, EFKM 12537 M-U70

Status: 29.10.08

	Article	Order number EFKM 10037 M-U70	Order number EFKM 12537 M-U70
	dirt sweeper with poly full trim	110 516 037	125 516 037
	dirt sweeper roller mixed with poly/corrugated wire trim (each 50%)	100 510 037	125 516 537
	combination roller brush with 5-row Polly twist trim	100 510 037	125 510 037
	snow sweeper	100 508 037	125 508 037

5 water spray device for the sweeper (5 liters)



No.	Order No.	Anz	Designation	No.	Order No.	Anz	Designation
1-10	961 050 229	1	water barrel, 5 liters completely	17	961 010 101	2.3	- Available by the meter!
1	961 711 120	1	container with anklet	18	908 300 138	3.5	pipe clamp
2	961 726 118	1	Pressure gauge with screw	19	961 040 026	2.2	coupling, sleeve
3	961 538 660	1	pump housing	20	961 030 017	2.2	coupling, plug
4	961 627 070	1	O-ring 38x5	21	961 020 002	1.1	stopcock
5	961 701 980	1	valve cone, completely	22	961 066 471	1.1	angle piece
6	961 615 972	1	valve spring	23	106,000,001	1.2	retaining plate water nozzle
7	961 602 700	1	valve cap	24	961 061 325	1.2	union nut
8	961 725 970	1	pump rods	25	961 060 015	1.2	water nozzle
9	961 538 870	1	guide shell	26	901 008 016	2.4	screw
10	961 507 490	1	pot collar	27	905 008 000	2.4	spring ring
11	050 000 010	1	mounting frame water barrel	28	900 008 001	2.4	Mother
12	907 002 001	1	spring pin	29	961 066 472	-, 1	T-piece
13	901 008 035	2	screw	30	908 618 015	2.2	rubber pipe clamp
14	900 008 002	2	lock nut	31	901 008 020	2.2	screw
15	908 300 165	3	pipe clamp	32	905,108,000	4.4	washer
16	961 010 102	2	water hose sold by the meter	33	900 008 002	2.2	lock nut